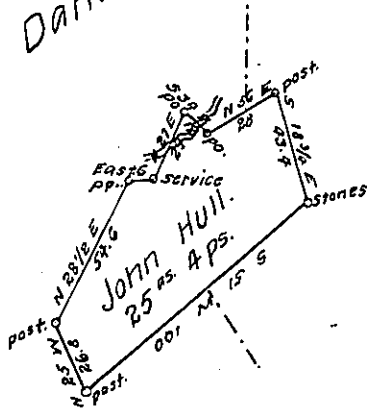


G. A. Danaker

G. A. Danaker



1174 4407

Situate on the North-West branch of the Shawnese Cabin  
 Creek, in Napier township Bedford County, Containing 25<sup>ac</sup> 4<sup>ps</sup>.  
 and the usual allowance of six per cent for roads &c. Surveyed  
 the 23<sup>d</sup> day of May A. D. 1867. In pursuance of a Warrant granted  
 to John Hull dated the 24<sup>th</sup> Nov. A. D. 1866 for 25<sup>ac</sup>.

Sam<sup>l</sup> Ketterman D. S.

To J. M. Campbell Esqr.

S. G.

Approved of this 10<sup>th</sup> of June A. D. 1867.

P. Donahoe. C. S.

IN TESTIMONY that the above is a copy of the original remaining on file in  
 the Department of Internal Affairs of Pennsylvania, made  
 conformably to an Act of Assembly approved the 16th day of  
 February, 1833, I have hereunto set my Hand and caused  
 the Seal of said Department to be affixed at Harrisburg,  
 this first day of August 1907.

*Henry Horner*  
 Secretary of Internal Affairs.